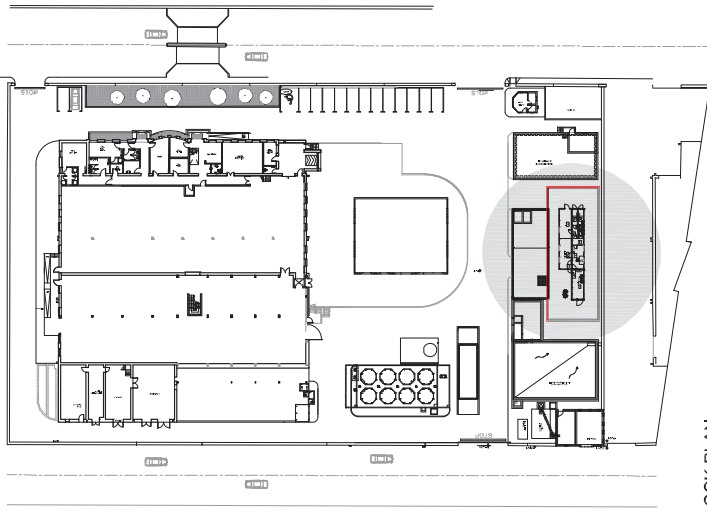


### Plan showing Modular Facilities



**BLOCK PLAN**  
scale 1:500



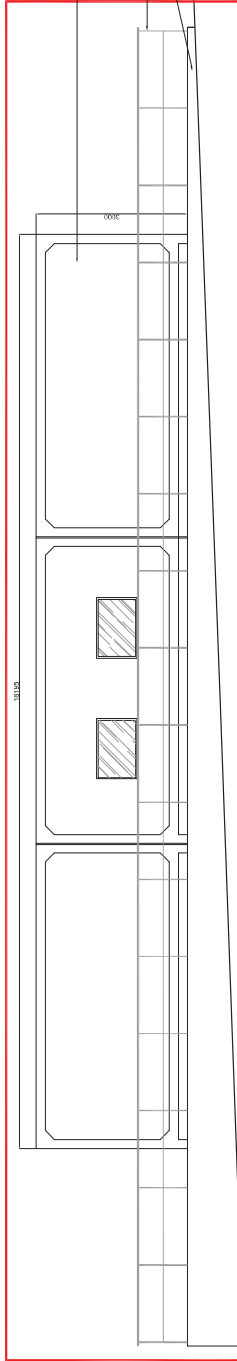
50185


**pre fabricated metal modular facilities**

metal railings

fair faced concrete plinth

**Elevation E1**  
scale 1:50



DATE	DATE RECEIVED		
TO		<b>Wallace Farrugia &amp; Associates</b> Architects, Civil Engineers & Structural Consultants 1000 West 10th Avenue, Suite 1000, Denver, CO 80202 Phone: 303.733.1100 Fax: 303.733.1104 E-Mail: info@wfaa.com	
FROM		Addition of Modular Facilities at Factory In Hal-Far	
SUBJECT		Medichem	
DATE		(Specify Date) <b>Block Plan, Plan of Modular          Facilities &amp; Elevation E1</b>	
SCALE		(Specify scale) as shown	
DATE		85/12	
DESIGN		APPROVED	SIGNED
BY		DATE	DATE
		W.F.	W.F.
		DESIGNED	DESIGNED

Complete © 2012 WALLACE FARRUGIA & ASSOCIATES